

THE START PAGE OF COMMUNICATOR IS THE ONE SHOWN BELOW. AT THIS PAGE WE USE USERNAME AND PASSWORD TO LOGIN.

Sign in

**cyta** COMMUNICATOR

**SIP address:**  
bbb

**Password:**

Available

Remember password  Automatic sign in

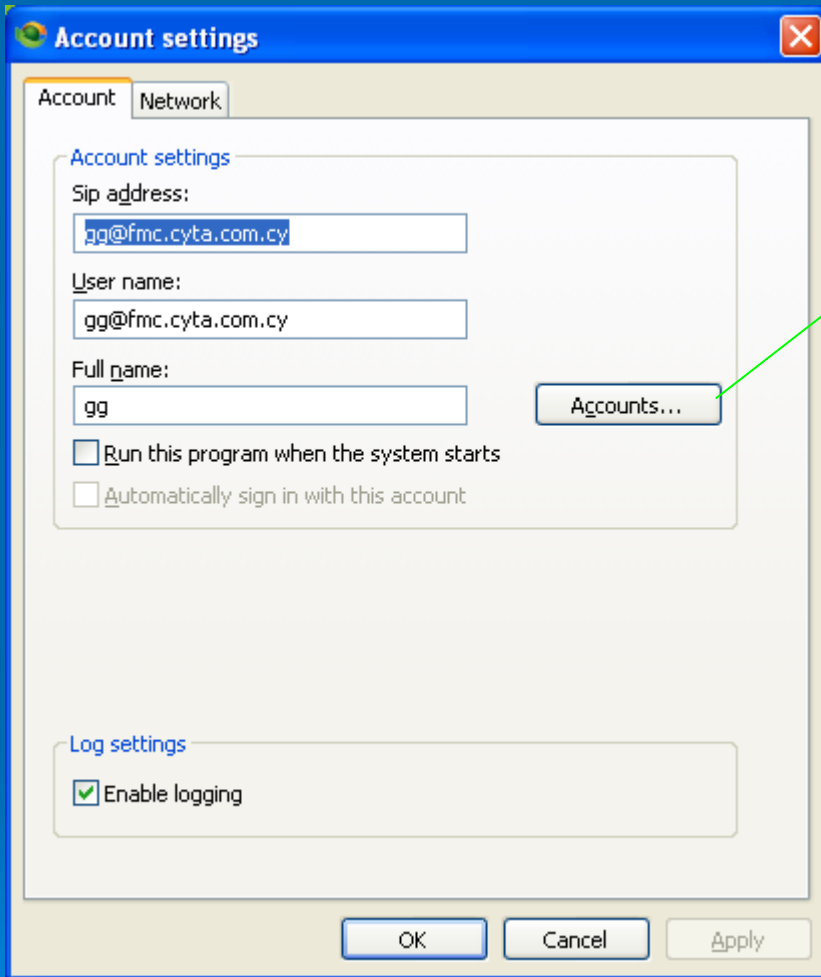
[▶ Account settings](#)  
[▶ Remove account](#)

**SIGN IN**

©2008 Movial Corporation

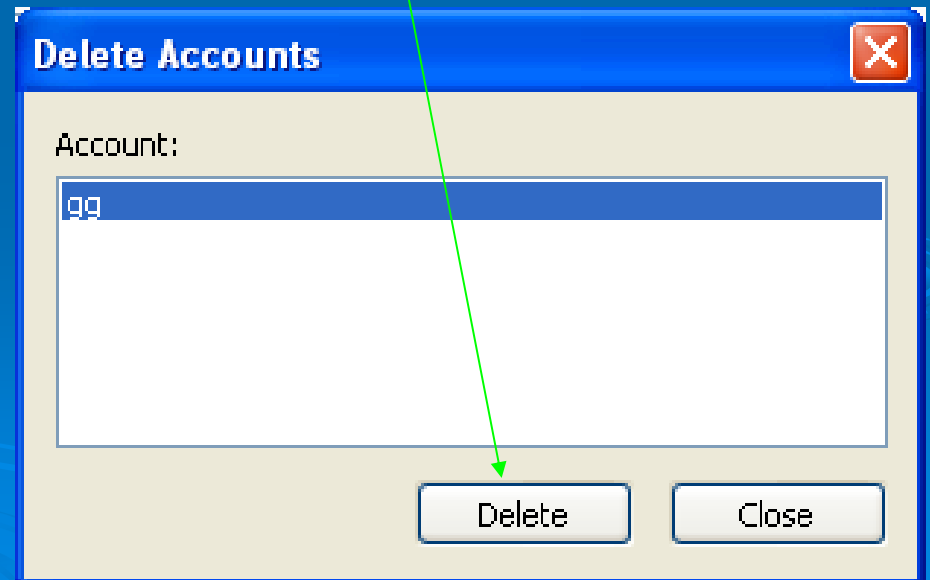
AT ACCOUNT SETTINGS WE CAN DELETE OR CREATE ACCOUNTS

# THE FOLLOWING DIALOGUE BOX OPENS WHEN WE SELECT ACCOUNT SETTINGS

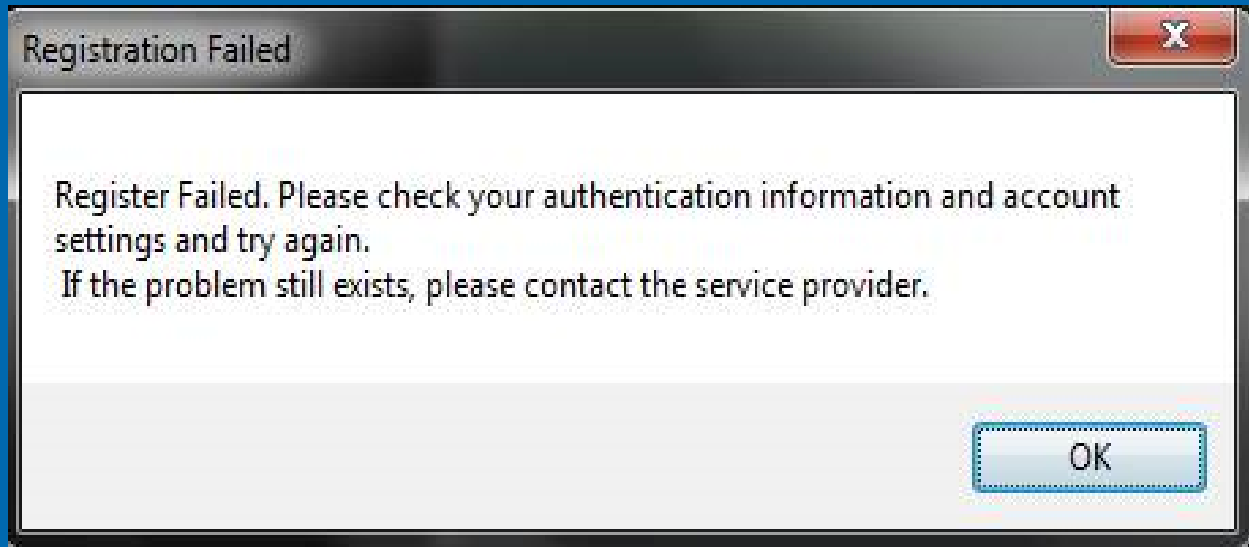


HERE WE CAN CHANGE THE PASSWORD.

BY CLICKING ACCOUNTS BUTTON WE CAN DELETE AN ACCOUNT.



THE FOLLOWING MESSAGE APPEARS WHEN USERNAME OR  
PASSWORD ARE NOT CORRECT.



CLICK OK TO SIGN OUT AND RETURN TO THE STARTING PAGE AND  
RELOGIN.

Welcome to



COMMUNICATOR

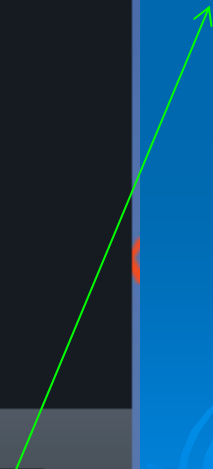
SIGNING IN



CANCEL

Connecting to server...

CLICK CANCEL BEFORE  
SIGNING IN AND  
BEFORE GETTING THE  
MESSAGE "DO YOU  
REALLY WANT TO SIGN  
OUT?". IT'S A WAY TO  
SIGN OUT.





BY CLICKING CANCEL  
THE MESSAGE “DO  
YOU REALLY WANT  
TO SIGN OUT?”  
APPEARS AND YOU  
HAVE TO SELECT YES

OR NO.  
mod\_easyfil...

Welcome to  
**cyta** COMMUNICATOR

**Cyta Communicator**  
Do you really want to sign out?  
Yes No

LOG IN

CANCEL

Connecting to server...



COMMUNICATOR




SIGNING OUT...



IT TAKES SOME  
TIME TO SIGNING  
OUT ...

## RELOGIN

Sign in ✕

 COMMUNICATOR

**SIP address:**  
bbb ▼

**Password:**

Available ▼

Remember password  Automatic sign in

[▶ Account settings](#)  
[▶ Remove account](#)

**SIGN IN**

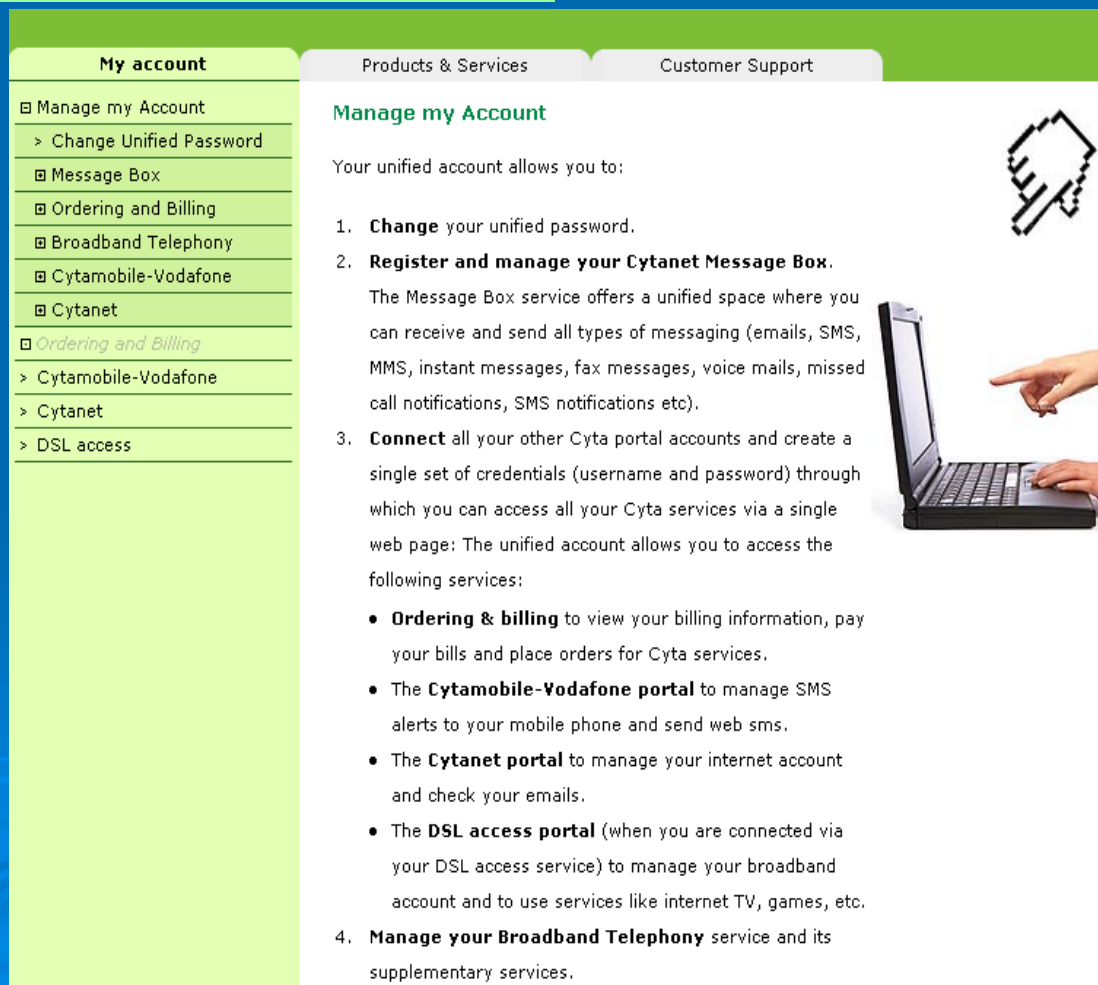
©2008 Movial Corporation

# CHANGE PASSWORDS

FOLLOW THIS LINK ON UNIFIED PORTAL:

<http://fmc.cyta.com.cy/UnifiedPortal/index.aspx?target=Login1>

LOGIN AT THE RIGHT HAND SITE...



The screenshot displays the Cyta Unified Portal interface. On the left, a navigation menu titled 'My account' includes options like 'Manage my Account', 'Message Box', and 'Ordering and Billing'. The 'Change Unified Password' option is highlighted. On the right, the 'Manage my Account' page is shown, featuring a list of instructions for users to manage their unified account, such as changing passwords and connecting other services. A hand is shown pointing at a laptop screen, and a cursor icon is visible in the top right corner.

**My account**

- Manage my Account
  - > Change Unified Password
- Message Box
- Ordering and Billing
- Broadband Telephony
- Cytamobile-Vodafone
- Cytanet
- Ordering and Billing
- > Cytamobile-Vodafone
- > Cytanet
- > DSL access

**Products & Services**

**Customer Support**

**Manage my Account**

Your unified account allows you to:

- Change** your unified password.
- Register and manage your Cytanet Message Box.**  
The Message Box service offers a unified space where you can receive and send all types of messaging (emails, SMS, MMS, instant messages, fax messages, voice mails, missed call notifications, SMS notifications etc).
- Connect** all your other Cyta portal accounts and create a single set of credentials (username and password) through which you can access all your Cyta services via a single web page: The unified account allows you to access the following services:
  - **Ordering & billing** to view your billing information, pay your bills and place orders for Cyta services.
  - The **Cytamobile-Vodafone portal** to manage SMS alerts to your mobile phone and send web sms.
  - The **Cytanet portal** to manage your internet account and check your emails.
  - The **DSL access portal** (when you are connected via your DSL access service) to manage your broadband account and to use services like internet TV, games, etc.
- Manage your Broadband Telephony** service and its supplementary services.



## SELECT:

1. MANAGE MY ACCOUNT
2. BROADBAND TELEPHONY
3. CONNECTION DEVICES CERTIFICATES

**My account**

- Manage my Account
- > Change Unified Password**
- Message Box
- Ordering and Billing
- Broadband Telephony
- Cytamobile-Vodafone
- Cytanet
- Ordering and Billing
- > Cytamobile-Vodafone
- > Cytanet
- > DSL access

**Products & Services**

### Manage my Account

Change the unified account password

Old Password \*:  
New Password \*:  
Confirm Password \*:

\* mandatory fields

HERE WE SEE THE EXISTING PASSWORDS

→ USERNAME

→ PASSWORD

→ TO CHANGE ACCESS PASSWORD